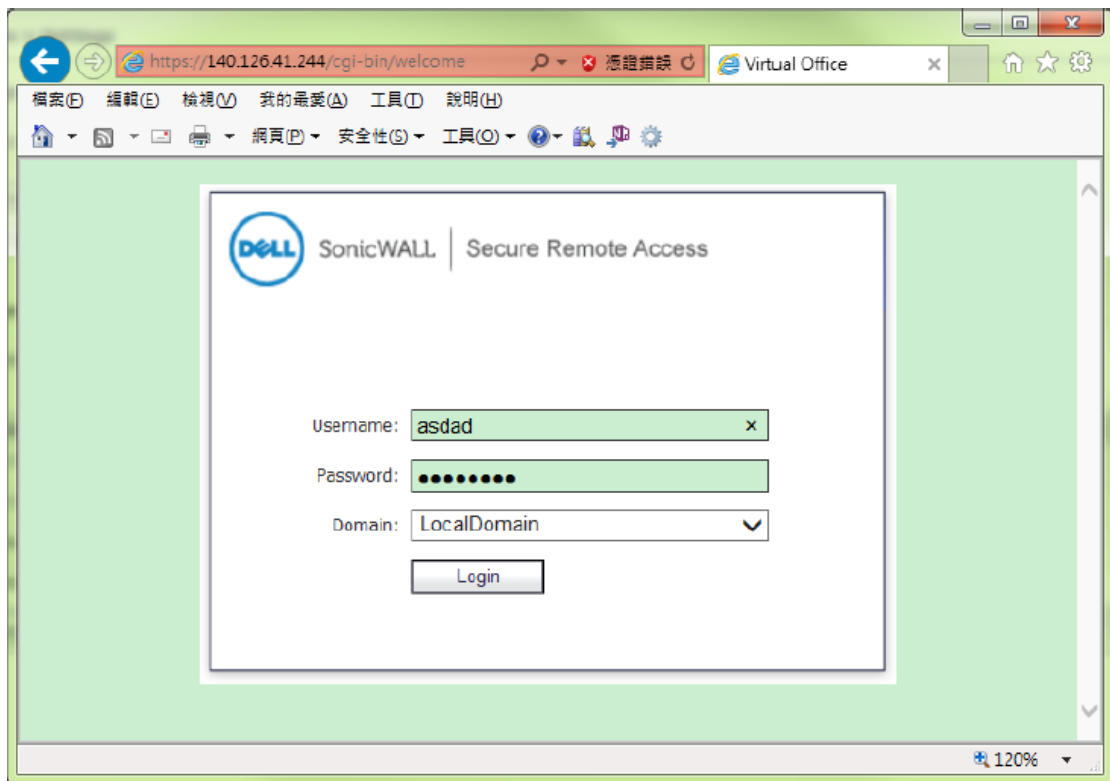
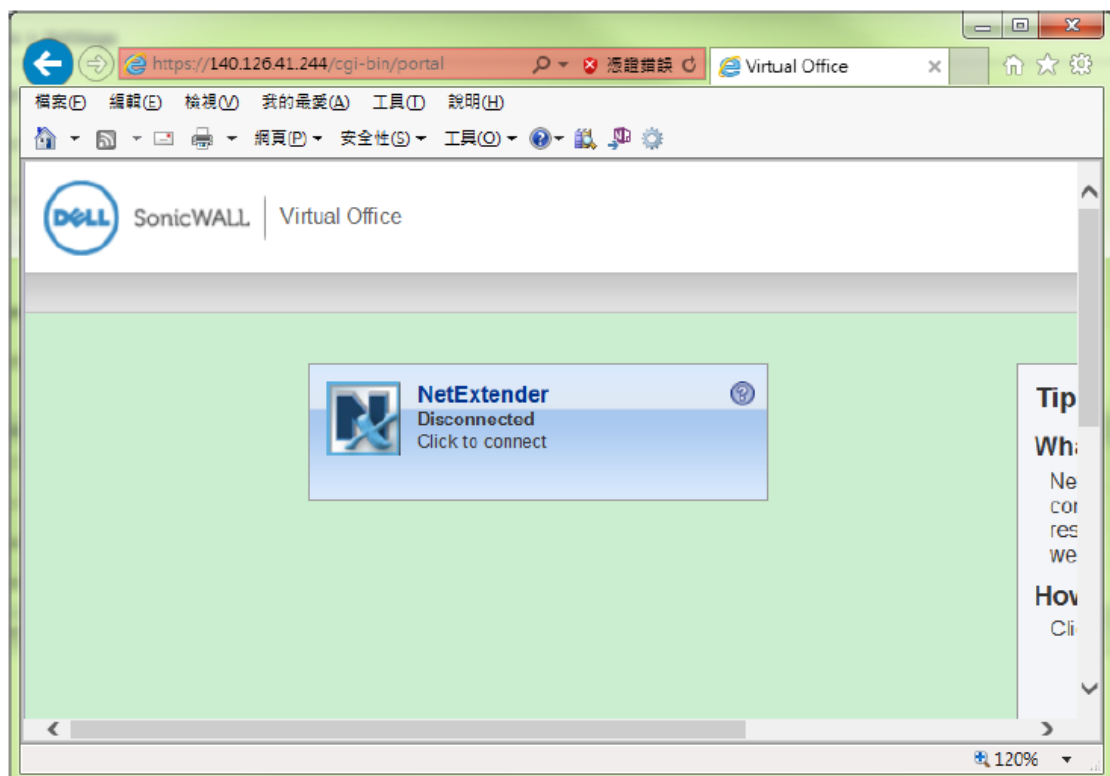


Tutorial on the SSLVPN for Management and Maintenance

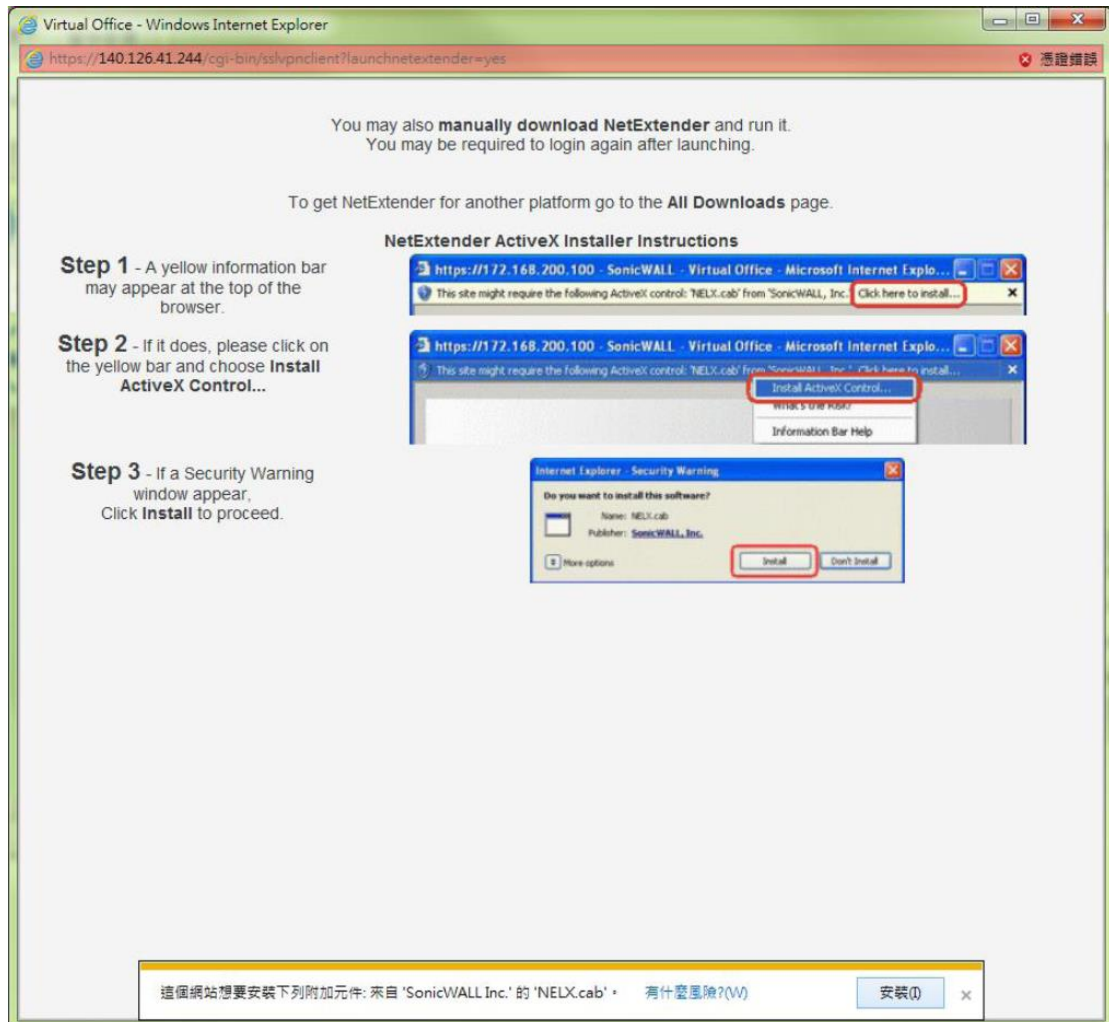
1. Connect to NTHU's SSLVPN using a browser. Enter your account and password.
Select LocalDomain as the domain.



2. After logging in, click NetExtender and follow the on-screen setup procedure.




3. Once setup is completed, the NetExtender program will be launched. Next, you can view the Routes page, which contains connectable destinations, in the displayed window. The connection is then established. While the NetExtender maintains the connection, you can connect to the desired destination and perform operations.



4. You can directly run the NetExtender program on the local computer for VPN connection after the first logon and connection.

NetExtender




SonicWALL | NetExtender


User: magurayu Connected: 0 Days 00:00:19

StatusRoutesDNS

Destination	Netmask
10.1	255
192	255
140	255
140	255
140	255
140	255
140	255

✕ Disconnect



 © 2014 Dell Inc.